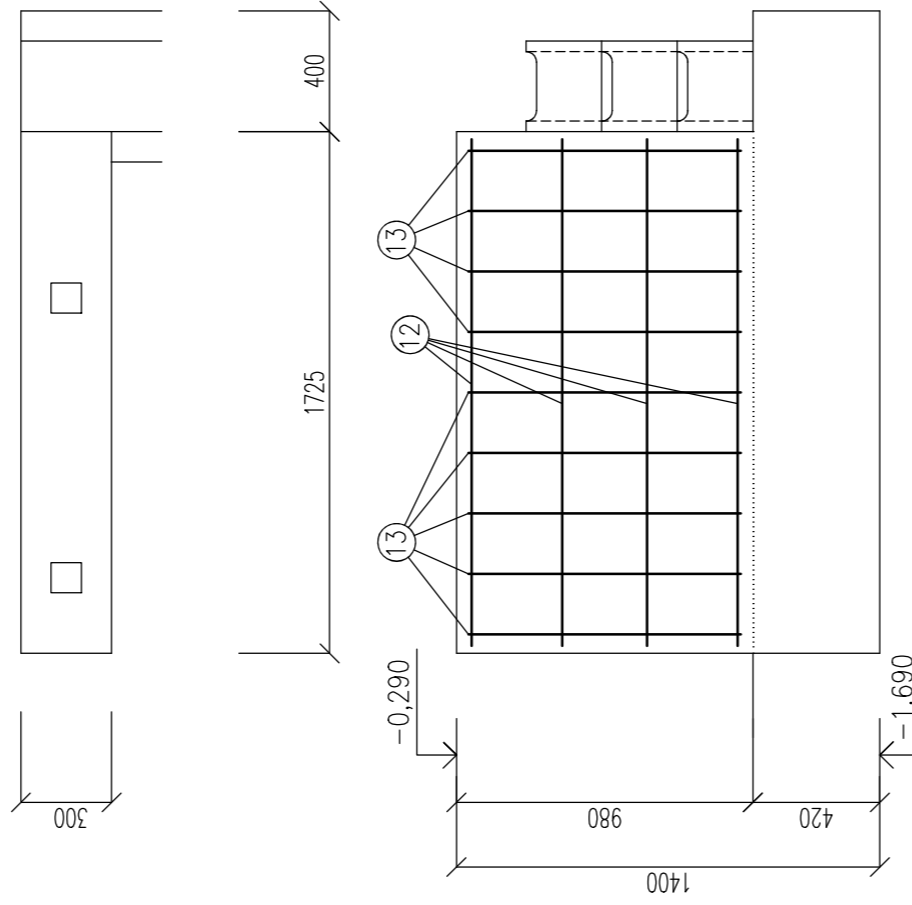



[illegible][illegible]

PAS P5 - 1ks
PÚDORYS




 1110
 869
 ③ øφ100x150mm-2,90mm-3+3=6ks

[illegible][illegible]

(7) TRM. ØR6d150mm
 DL.1,54m-2x11=22ks
 190 510 570 130 70

(8) TRM. ØR6d150mm
 DL.1,66m-2x11=22ks
 190 510 570 130 70

(9) Sif KARI ø6x150/150
 1,35x0,60=0,81m²-1ks

5) TRM. $\phi R6$ $\delta 150\text{mm} - 1,90\text{m} - 7\text{ks}$

Technical drawing showing two views of a rectangular plate:

- Top View (Left):** A rectangle with overall dimensions of 600 mm by 600 mm. The inner dashed rectangle has dimensions of 500 mm by 500 mm. A circular feature is indicated by a dimension line labeled $\varnothing 2$.
- Side View (Right):** A rectangle with an overall width of 1100 mm. The distance from the left edge to the center of the circular feature is 900 mm. The thickness of the plate is indicated as 20 mm.


Technical drawing of a building facade. The drawing includes a main elevation and a detail view. The main elevation shows a rectangular structure with a height of 1400 and a width of 1300. A dimension line indicates a height of 1400, and another indicates a width of 1300. A small circle with the number 53 is located near the top left corner. The drawing is labeled "REZ 6-6" and "500". A detail view shows a corner of the structure with dimensions 500, 500, and 500, and an angle of 30°.

Technical drawing of a rectangular plate. The overall dimensions are 1100 (width) and 1390 (height). A dashed rectangle inside represents a specific feature, labeled with a circled '2'.

Technical drawing of a rectangular plate. The plate has a width of 300 and a height of 420. There are two holes, labeled 9 and 10, with a diameter of $\varnothing 63$. The distance from the top edge to the center of hole 10 is 70, and the distance from the right edge to the center of hole 10 is 240. The distance from the top edge to the center of hole 9 is 230, and the distance from the right edge to the center of hole 9 is 420. The drawing is labeled with a circled 11 and the text "TRM 08/63" and "D.L. 1,46m-".

⑪ TRM. $\phi R6 \div 150 \text{ mm}$
DL. $1,46 \text{ m} - 2 \times 27 = 54 \text{ ks}$

QZLN	Ø	DEKLA m	KS	DEKLA DIE Ø VELENEM m				PLOCHA ŠIF K43RI
				Ø66	Ø68	Ø80	Ø812	
1	R10	2,90	5				14,50	60/59/50
2	R10	1,90	9				17,10	
3	R10	2,90	6				17,40	
4	R10	2,90	3				8,70	
5	R6	1,90	7	13,30				
6	R12	2,60	20				52,00	
7	R6	1,54	22	33,88				
8	R6	1,66	22	36,52			21,60	
9	R12	5,40	4				16,00	
10	R12	4,00	4					
11	R6	1,46	54	78,84				
12	R10	1,65	8		13,20			
13	R6	2,45	9		22,05			
14	R10	1,25	65		81,25			
15	R10	1,50	113		169,50			
16	R10	1,75	93		162,75			
17	R10	2,00	20		40,00			
18	R12	760,00	-				760,00	
S1	Øx150	0,81	1					0,81
S2	Øx150	2,30	6					13,80
S3	Øx150	2,99	2					5,98
			m	162,54	22,05	524,40	849,60	20,59
			kg/m	0,222	0,395	0,617	0,868	2,960
			kg	36,08	8,71	33,335	75,444	60,95
			CELKEM					
			kg	44,79		107,99		60,95

 ASET studio architektura a projektování interiéru ASET studio s.r.o., Troskova 41, 730 00 Olomouc IČO: 253 20 000 www.asetstudio.cz	Superior PD:	Documentace pro stavební řízení			Zak. č.: 1723 Datum: 12/2017 Měřítko: 1:100/1:25 Část: Paré: Vykř.: b01	
	Hlavní architekt:	Ing. arch. Stanislav Šincel				
	Vedoucí projektant:	Ing. Jan Turek				
	Výpracováno:	Ing. Jan Baviřil				
Alceas PŘÍSTAVBA A STAVEBNÍ ÚPRAVY ENERGOCENTRA	Místo:	parc. č. 1705/1, 1705/47, 1705/47, 1705/47 k.ú. Holeš u Olomouce			Datum: 12/2017 Měřítko: 1:100/1:25 Část: Paré: Vykř.: b01	
	Investor:	Univerzita Palackého v Olomouci, Kláškovského 55/16, 771 47 Olomouc				
	Objekt:	S010; S010; S014				
	Část:	Stavební konstrukční řešení				
Vykres:		Výzvuž základů				